

SM 518.3

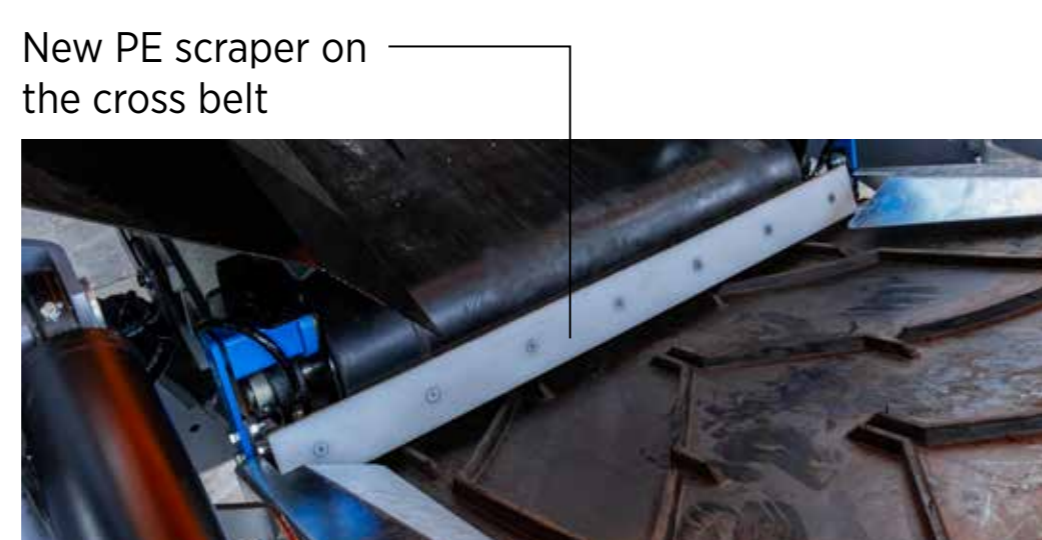
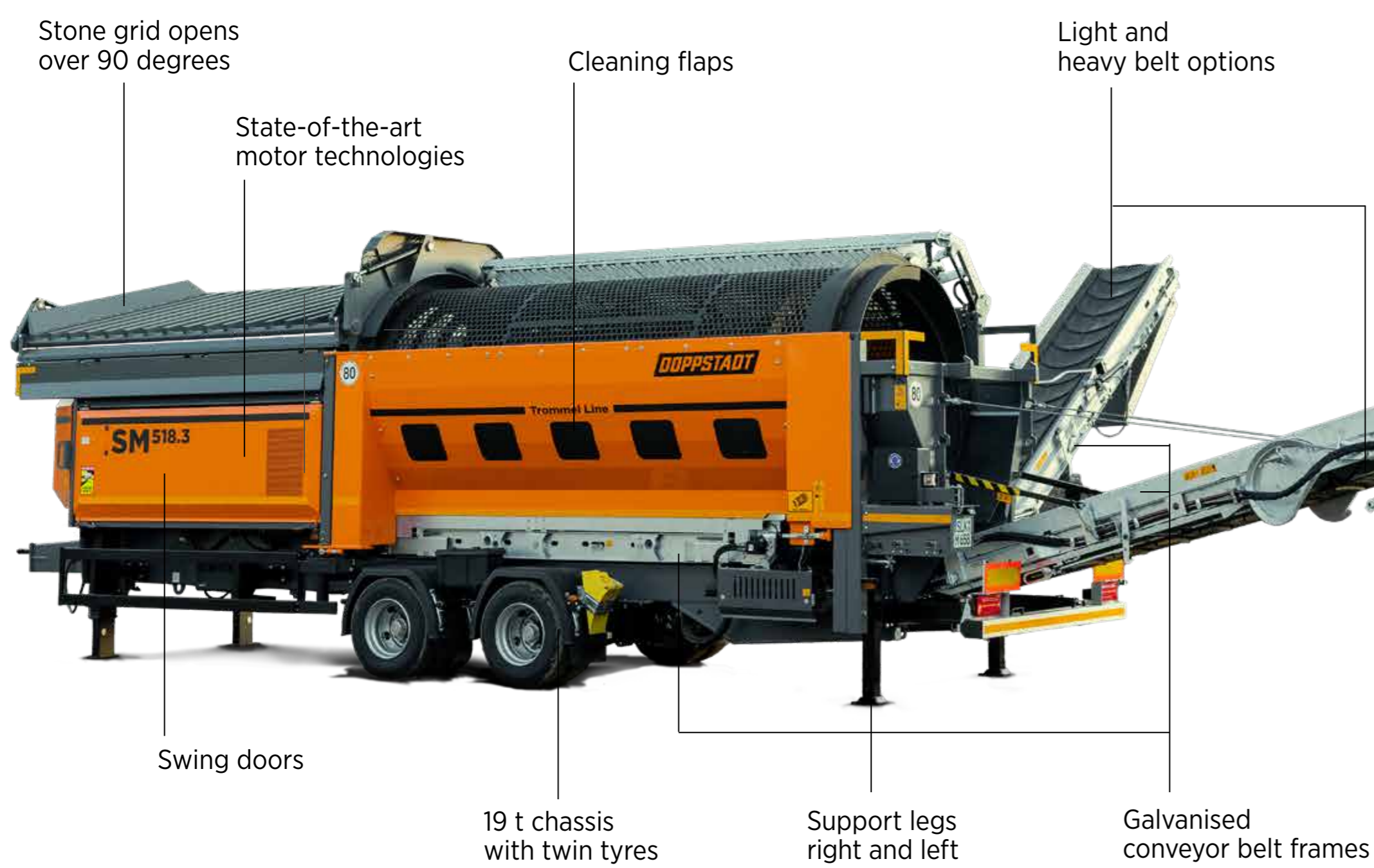
TROMMEL LINE

DOPPSTADT

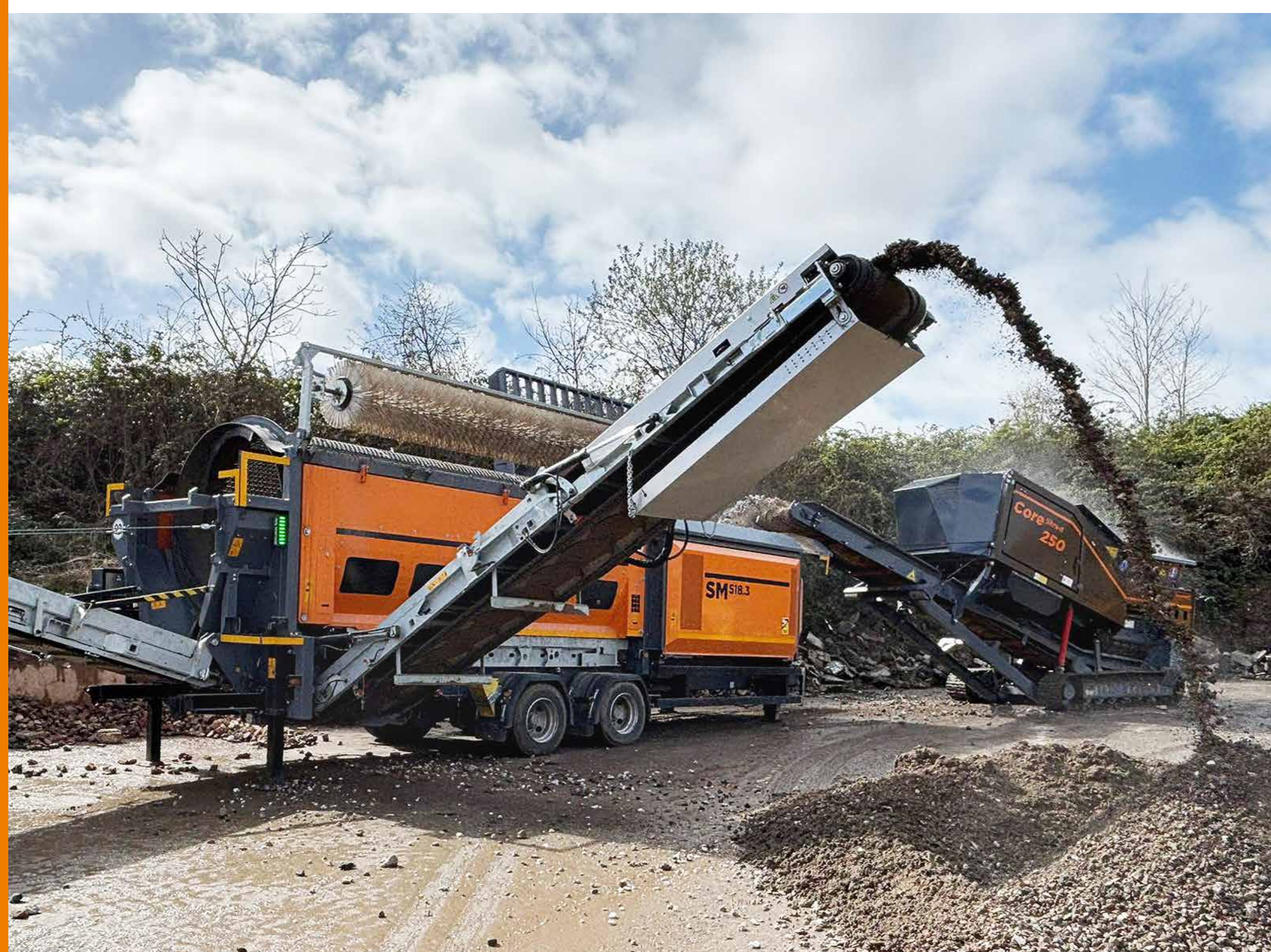
BUILT TO RUN

SIMPLE AND EFFICIENT SCREENING - THE UNIVERSAL EXPERT FOR THOSE NEW TO SCREENING

Our most compact, highly flexible model now features Dual-Power drive technology, just like its big sister, the SM 620.3, and delivers top-quality end products in up to four fractions. There are three drive options to choose from (without AdBlue): diesel, electric or as DualPower. This combines both variants in a single machine, allowing operators to switch easily and flexibly between diesel and electric drive, adapting perfectly to the existing on-site infrastructure.



SM 518.3			
Chassis	2-axle-trailer		
DIMENSIONS			
Overall weight	12.300 kg		
WORKING POSITION			
Length	14.980 mm		
Width	6.885 mm		
Height	3.450 mm		
TRANSPORT DIMENSIONS			
Length	11.075 mm		
Width	2.450 mm		
Height	3.930 mm		
DRIVE			
Engine type	Diesel-hydraulic	Electro-hydraulic	both drives in one machine
Make	DEUTZ TCD 2.9 L4	Three-phase motor	
Nominal output	45 kW (62 HP) at 2.200 rpm	37 kW	
Max. torque	300 Nm at 1.600 rpm	239 Nm at 1.480 rpm	
Emission standard / Energy-efficiency class	Stage V / EIIIA	IE4	
Tank capacity / El. connection	200 l	63 A	
SCREEN DRUM			
	Two screening fractions, Options: 3rd fraction using stone grid, 4th fraction magnetic pulley		
Length	4.700 mm		
Diameter	1.800 mm		
Mesh size	Selectable, 3 - 150 mm		
Mesh type	Selectable (square perforation, alternating squares, round perforation, comb)		
Material thickness	Selectable		
Drum rotational speed	0 - 21 rpm		
Screening area	22,5 m ²		
FEED HOPPER			
Hopper volume	5 m ³		
Loading height	2.800 mm		
Loading Width	3.780 mm		
CONVEYOR BELTS			
	Rear belt	Side belt	
Length (*=optional)	5.500 mm (3.000 mm*)	5.500 mm	
Width	8.000 mm	8.000 mm	
Discharge height	3.450 mm	3.545 mm	
Conveying speed	1,4 m/s	2,8 m/s	



MOST IMPORTANT CHANGES AT A GLANCE.

- Three drive options possible: (without AdBlue additive): Diesel, Electric or as DualPower
- Modern load-sensing hydraulic control system
- Galvanised discharge belts
- Belt variants in light and heavy-duty versions
- New scrapers for all applications
- Large 5,0 m³ feeding hopper with low feeding height of 2.8 m
- Stone grid that opens more than 90°
- Simple cleaning flaps for the screen drum in the side door
- Extensive standard safety features
- Remote control in Basic or Pro version
- 19 t chassis with twin tyres